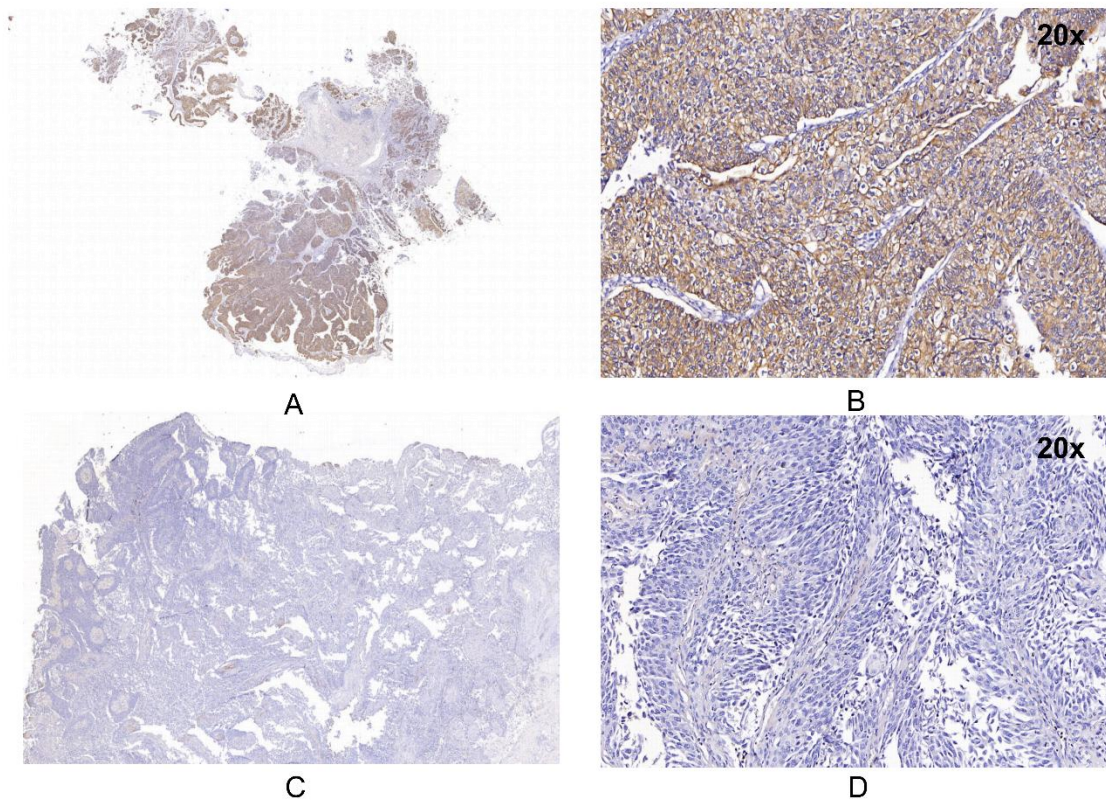
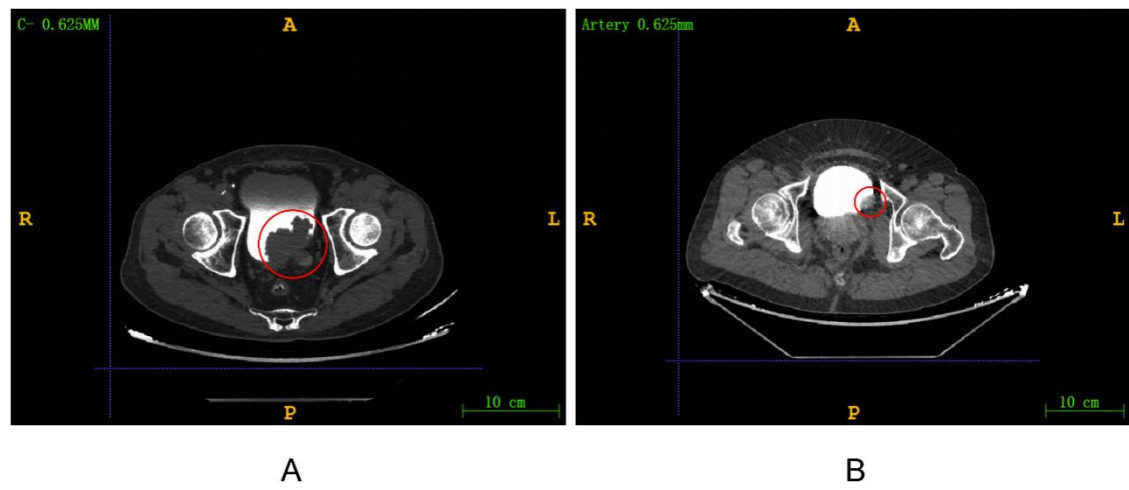


## Supplementary Information

**Figure S1. Immunohistochemical staining is used for HER2 assessment.** Figure A is an image of bladder cancer tissue after immunohistochemical staining showing a positive expression of HER2. Figure B is a 20x magnified image of the local area of Figure A, with HER2 expression remaining positive. Figure C is an image of bladder cancer tissue after immunohistochemical staining showing a negative expression of HER2. Figure D is a 20x magnified image of the local area of Figure C, with HER2 expression remaining negative.



**Figure S2. The presentation of HER2 expression status in CTU images.** Figure A shows the CTU image with positive HER2 expression, and Figure B shows the CTU image with negative HER2 expression. The bladder tumor is indicated by the red circle.



**Table S1.** Radiomic features can be found in excel.